

SPECIFICATIONS

Copying Process	Indirect Electrostatic Photographic Method (Dry Process)
Copying Type	Laser Electronic
Original Reading Method	CCD Line Sensor
Control Panel	Icon Based LCD Touch Panel; Key Top
Copy/Print Resolution	2,400 x 600 dpi
Gradation	256 Steps
Copy/Print Speed	52/60/72 PPM (Letter)
Warm-Up Time	Approximately 130 Seconds
First Copy Out Time	Less Than 4.0 Seconds (Letter)
Duty Cycle	450,000/500,000/575,000 Copies
Multiple Copying	Up to 9,999 Copies
Paper Exit	Face Down
Paper Supply	500 x 2 Drawers; 1,250-Sheet x2 Tandem Drawer; 100-Sheet Universal Stack Feed Bypass (Standard); Optional 4,000-Sheet External LCF
Bypass	Stack Feed Bypass (100-Sheet)
Acceptable Paper Size	Drawer: Statement-R (5.5" x 8.5") to Ledger (11" x 17"); Stack Feed Bypass: Statement-R (5.5" x 8.5") to Ledger (11" x 17"); Optional External LCF: Letter Only (8.5" x 11") 17 lb. Bond - 110 lb. Index
Acceptable Paper Type	Standard Bond, Overhead Transparencies, Tab Sheets – Drawer 2 + Bypass
Memory	320 MB + 40 GB HDD
Reduction/Enlargement	25% to 400% in 1% Increments
Dimensions	27.5" x 31.1" x 47.8" (W x D x H)
Weight	Approximately 462 lbs.
PM Cycle	450,000/500,000/575,000
Toner Control Method	Automatically Controlled; Toner Empty Detection; Electrical
Drum Type/Yield	Organic Photoconductor/450,000/500,000/575,000
Black Toner Yield	62,400
Black Developer Yield	450,000/500,000/575,000
Power Supply	120 Volts; 60 Hz; 20 A
Power Consumption	Maximum 2.0 kW (115 Volts)

COPY FUNCTIONS

Special Features	Access Codes (10,000 User, 1,000 Department), Alternation, Annotation, AMS/APS, Auto Job Start, Auto Drawer Change, Auto Duplex, Auto Energy Saver, Auto Sleep Mode, Auto Sort Mode, Center Erase, Control Panel Text Input, Copy-On-Tab, Cover Sheet, Date/Time Indication, Department Code Data Print Out, Document Storage, Dual Page Copying, Edge Erase, e-FILING, Electronic Sorting (Sort, Group & Staple), Energy Saver, Help/Info. Function, Image Direction, Image Adjustment, Image Shift, Interrupt Memory, Job Build, Job Memory – Templates, Job Reservation (Scan Ahead) – 10 Jobs, Magazine Sort, Mirror Image, Negative/Positive, OHP Sheet Mode, Original Counter, Page Numbering, Rotation Copy, Sheet Insertion, Smart Bypass, Text, Text/Photo, & Photo Modes, Thick Paper Mode, Trimming/Masking, Weekly Timer, X-Y Zoom, Zoom Indicator, 2-in-1, 4-in-1, 8-in-1 Copy Mode
-------------------------	--



* 523T not Energy Star Compliant

Corporate Office: 2 Musick, Irvine, California 92618-1631

Tel: 949/462-6000

East Coast: 959 Route 46 East, 5th Floor, Parsippany, New Jersey 07054

Tel: 973/316-2700 Fax: 973/263-2393

Midwest: 8770 W. Bryn Mawr Avenue, Suite 700, Chicago, Illinois 60631

Tel: 773/380-6000 Fax: 773/380-8077

South: 4855 Peachtree Industrial Blvd., Suite 210, Norcross, Georgia 30092-3024

Tel: 770/209-8540 Fax: 770/209-8556

West Coast: 142 Technology, Suite 150, Irvine, California 92618

Tel: 949/462-6262 Fax: 949/462-2700

Web Site: www.copiers.toshiba.com or www.fax.toshiba.com

© 2008 Toshiba America Business Solutions, Inc., Electronic Imaging Division

e-STUDIO523T/603T/723T Bro./Inv. Code ES523T603T723T1

PRINT

PDL Support	PCL6™, PostScript™ 3, XPS
Fonts	PCL 80 Fonts, PS 136 Fonts, Monotype Font Manager
Operating Systems	NetWare® 4.x, 5.x, 6.x, Windows® 2000, Windows® OS Terminal Edition, Windows® Vista, XP, 2003 Server, Citrix® Metaframe XP®
Protocol Support	IPX/SPX, TCP/IP, IPv4, IPv6, EtherTalk®, LPR/LPD, IPP, WINS, SNMP, SMB, AppleTalk®, NetBIOS, NetWare®, Port 9100 (Bi-Di), Bluetooth® (HCRP)
Drivers	Windows® 2000*, Windows® XP*, Vista*, 2003 Server* *(32 bit/64 bit); Macintosh® OS 8.6, 9.x, 10.1-10.5 (With PPD), UNIX®, AS/400 via iData, ERP Support SAP R/3
Connectivity	10BaseT/100BaseTX Ethernet, USB, IEEE 1284, 802.11b/g Wireless LAN, Bluetooth® (HCRP)
Device Management	TopAccess™
Certifications	WHQL, Novell®

SCAN

Scan Resolution	600 dpi, 400 dpi, 300 dpi, 200 dpi, 150 dpi
Scan Speed	Up to 83 PPM @ 300 dpi, 71 PPM @ 600 dpi
File Format	TIFF Single/Multipage, PDF, JPG
Void Area	2mm All Sides
Drivers	TWAIN (No ISIS)
Authentication	SMTP, LDAP

e-FILING

Operation Method	Touch Screen Control Panel or Client PC
Number of Boxes	1 Public Box; 200 Private User Boxes
Capacity of Boxes	100 Folders Per Box; 400 Documents Per Folder; 1,000 Pages Per Document
File Format	TIFF-MMR, TIFF-S, PDF

OPTIONS

FINISHING OPTIONS

MJ1027	Multi-Position Stapling Finisher (50-Sheet)
MJ1028	Multi-Position Stapling Finisher with Saddle-Stitch (50-Sheet)
MJ1029	Multi-Position Stapling Finisher with Saddle-Stitch (100-Sheet)
MJ6003	Hole Punch Unit
MJ7001	Post Inserter Unit
KN1017	Finisher Guide Rail

ADDITIONAL PAPER OPTIONS

MP4004	4,000-Sheet Front Loading Large Capacity Feeder, for LT Size
---------------	---

SECURITY OPTIONS

GP1040	Scrambler Board
GP1060	Data Overwrite Kit

CONNECTIVITY OPTIONS

GM2041	Print & Scan Enabler
GM1051	Printer Enabler
GM4010	Scanner Enabler
GC1230	512 MB Memory Upgrade (Required for XPS Printing)
GD1170	Fax Board
GO1050	PCI Slot
GN1040	Wireless LAN Module
GN2010	Bluetooth® Module
GN3010	Antenna
GF1140	Parallel Interface Kit
GB1250	Re-Rite - Integrated OCR Conversion Distribution Tool
GB1420	e-BRIDGE Job Build
GB1410	e-BRIDGE Job Separator
TB-04SXP01-03	eCopy ScanStation OP
TB-ACCSS02-00	eCopy ScanStand Accessory Box

Designs and specifications subject to change without notice. For best results and reliable performance, always use supplies manufactured or designated by Toshiba. Toner yields are estimates, based on 6% coverage, letter-size page. Driver and connectivity feature support varies by client/network operating system. Not all options and accessories may be available at the time of product launch. Please contact a local Authorized Toshiba Dealership for availability.

AUTHORIZED TOSHIBA DEALER

e-STUDIO™ 523T/603T/723T

Power Packed. Feature Rich. Volume Heavy.



52/60/72



Workgroup



Black & White



Copy / Print / Scan / Fax

TOSHIBA

Leading Innovation >>>

Power an entire business. And then some.

Toshiba brings you the power, functions and capacity needed to run the busiest, most sophisticated business. The **e-STUDIO 523T/603T/723T** Tandem Series includes everything people have come to appreciate in Toshiba MFPs, plus a tandem drawer configuration for even greater paper handling capacity. From an extra large LCD display for ease-of-use to the high-quality output—up to a maximum of 7,600 pages—businesses can now operate more efficiently than ever.

e-STUDIO™ 523T/603T/723T







Toshiba technology in tandem.

2,500

SHEETS MORE

The e-STUDIO523T/603T/723T Tandem Series allows for an additional 2,500-sheet capacity.

This can be added to the optional maximum capacity for a grand total of 7,600 sheets.

Combining high-volume document processing with speed and image quality, these Toshiba MFPs make short work of long jobs.

Maximum flexibility.

Two universal 500-sheet drawers accommodate statement to ledger-size paper of up to 110-pound index stock. In addition, a built-in large capacity drawer holds two stacks of letter-size paper, each consisting of 1,250 sheets. When the first stack of paper has been used, the second stack automatically shifts over so operation remains uninterrupted. This allows for longer runs in a shorter period of time. The standard capacity, including a 100-sheet Smart Stack Feed Bypass, totals 3,600 sheets. Add the optional 4,000-sheet LCF for a grand total of 7,600 sheets to complete any job, large or small.





2400 x 600 dpi

Speed and performance.

Utilizing advanced Toshiba technology, the **e-STUDIO523T/603T/723T** Tandem Series can produce all the documents you need, right when you need them. Copies and printouts are produced at the rate of 52, 60, and 72 pages per minute, respectively, with a first copy out time under 4 seconds. Originals can be scanned at the rate of 71 per minute at 600 dpi, and even faster at lower resolutions. In order to save more time, the units offer 100% duplex productivity along with a 130-second warm-up time and a 30-second recovery from standby.

The full-featured information hub.



With eCopy™ ScanStation OP document imaging and distribution software, take advantage of flexible, rapid solutions for paper-to-digital business integration. Essentially what you have is a full-featured information hub that can integrate hardcopy documents directly into the workflow of your critical business processes. Whether it's reporting, administration, document management, financials, human resources, or customer management, tasks are handled quickly and efficiently.

Convert scanned documents.

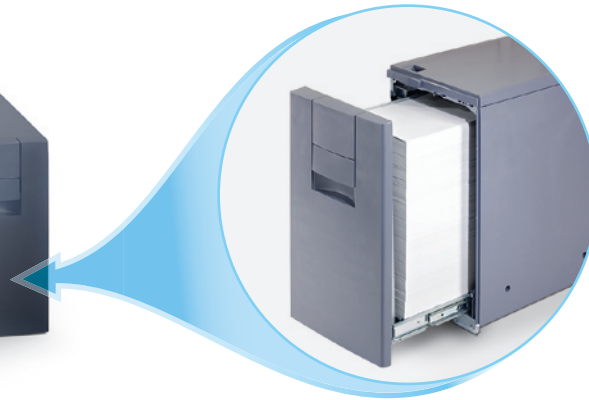


Thanks to e-BRIDGE™ | Re-Rite™, you can convert scanned documents into 17 different formats, instantly, without user intervention. Optical Character Recognition (OCR) file format transforms scanned text and graphic documents into editable, searchable file formats such as .doc, .html, .pdf, and more. Converted images can then be sent to network drives, or emailed—or both.



Tandem paper configuration

4,000-Sheet Large Capacity Feeder



The top performers.

Secure MFP.

The security of document production has become extremely important in today's business environment. These MFPs have been designed with security in mind. Each has a scrambler board option that encrypts hard drive data. A data disk overwrite option protects previous copy and print job data on the hard disk drive by writing over it multiple times. Also, full SMTP authentication with LDAP support ensures scanned documents are only emailed by users who can be identified by the recipient. To regulate usage and allow only those with authorized access, there are 10,000 user codes available. Providing even more security, the latest 802.11g wireless encryption protocol support enables secure wireless usage.



Change toner, avoid downtime.

The **e-studio523T/603T/723T** Tandem Series reduces downtime in a variety of ways. In fact, when it comes to changing the toner cartridge, downtime is eliminated altogether. Thanks to advanced Toshiba technology called "toner on the fly", you can replace the high-yield toner cartridge right in the middle of an important job. There's no need to stop operation or miss a tight deadline.

Performance never looked better.

Speed is only valuable when the product remains high-quality. That's why Toshiba ensures image quality with a crisp, clear 2400 x 600 dpi using an advanced image processor unit. Ultra-fine 8-micron toner and 40-micron developer help keep images crisp, offering exceptionally fine resolution. An 8-bit monochrome scanner produces precise grayscales while sharpening onscreen images. And when outputting these impressive-looking documents, choose from three finishers—a 50-sheet multi-position stapling finisher, a 50-sheet unit with saddle-stitch booklet making, and a 100-sheet finisher with saddle-stitch.



A single board with multiple advantages.

Toshiba's single board architecture uses e-BRIDGE™ technology to combine copy, print, scan and other functions. This allows you to add functionality as needed with Enablers that can be installed quickly and easily—simply plug and print. Even fax functionality is easily added. Also, frequently reprinted documents can be stored on the device's hard disk drive and accessed from the front panel or your desktop using e-FILING. Other features include Scan-to-Email, Internet faxing, and TopAccess®—the remote administration utility with a common interface across Toshiba products.



Make professional looking booklets with letter, legal, and ledger-size paper.

The Toshiba Quality Commitment is our guarantee that you're getting the utmost in advanced technology, dependability, service and support. Toshiba stands squarely behind our promise with the assurance of complete satisfaction. Everything we do contributes to that goal. From setting the industry standard for research and development, to providing instant access to Toshiba support personnel. Look around. Nothing compares to Toshiba...quality guaranteed.

TOSHIBA
Leading Innovation >>>

